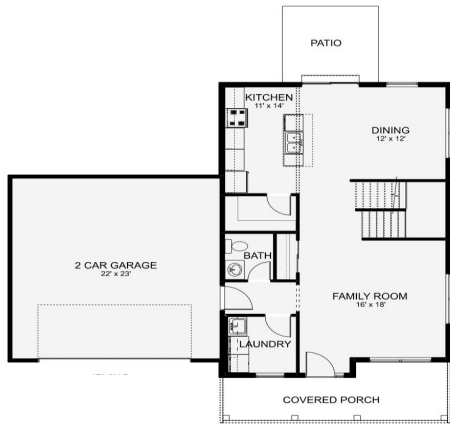


Irving



MAIN FLOOR: 892 SQ FT

GARAGE: 528 SQ FT

PORCH: 152 SQ FT



2ND FLOOR: 892 SQ FT

BASEMENT UNFINISHED: 892 SQ FT



1819 E. Monroe Street, Goshen, IN 46528

574-533-8603

www.journeybuilt.com